

FÖRDERGURTE

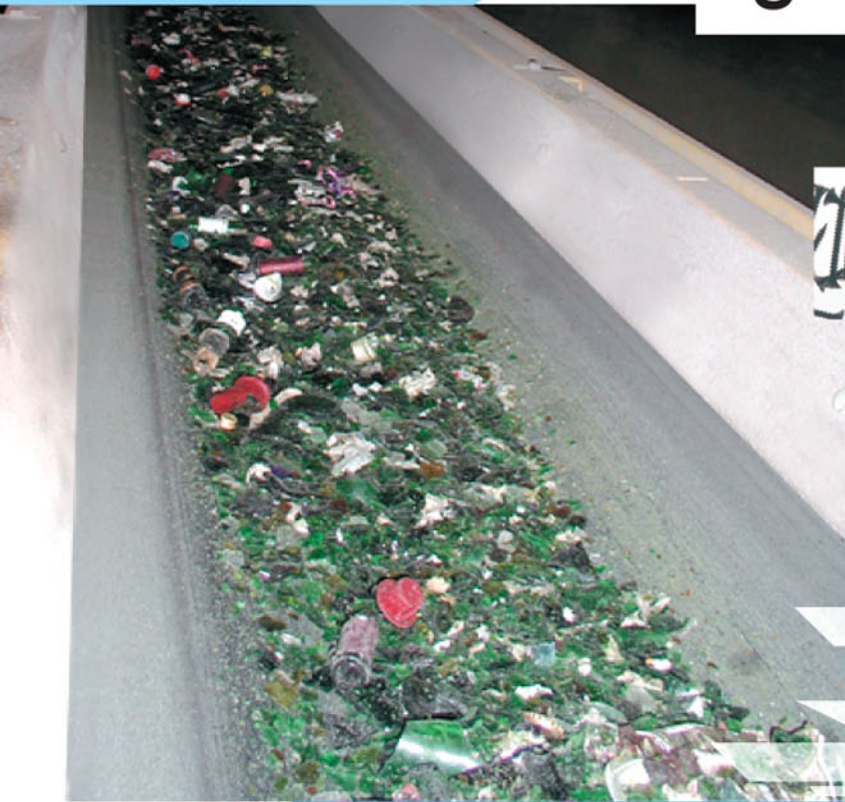
CONVEYOR BELTS

TRANSPORTNI TRAKOVI



# W, WH and WL conveyor belts

*nothing can wear them out*



*Conveyor belts*

*Courroies transporteuses*

*Fördergurte*

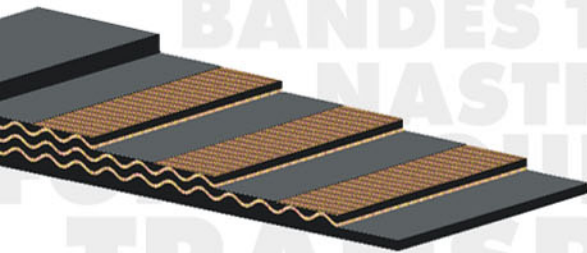
*Nastri trasportatori*

# W, WH and WL CONVEYOR BELTS

*nothing can wear them out*

Conveying bulk solids does not always flow smoothly; sharp-edged, abrasive goods, as well as cleaning of conveyor belts with sharp and high-efficient cleaning devices and scrapers can increase wear and tear of rubber covers.

Thanks to the development of a special rubber quality at SAVA this process has been reduced to a minimum and cleaning of the belt by a scraper has been improved.



## The construction of W, WH and WL conveyor belts:

- our renowned two- or multiply EP carcass (warp polyester + weft polyamide)
- special rubber interlayer with good fabric adhesion (skimmed layer)
- either extremely high abrasion resistant cover of W type
- or extremely high abrasion resistant and anti-adhesive cover of WH type (wear <math>< 90\text{mm}^3</math>; - or highly wear resistant of approx.

## With regard to the intended use there are three types of conveyor belts available:

- W – for conveying extraordinary abrasive materials (silica sand, broken glass ...)
- WH – for conveying extraordinary abrasive and extremely sharp material and/or demanding cleaning procedure
- WL – for conveying extremely abrasive materials or wear due to belt cleaning (REA-gypsum)

## W, WH and WL conveyor belts are basically used in

conveyors, which due to the conveyed goods are extremely exposed to wear, or are difficult to clean, such as:

- slag conveyors
- REA-gypsum
- broken glass, glass batch
- silica sand or materials containing silica sand
- ascending conveyors with slipping type of material
- clay and argil
- ...

## W, WH and WL conveyor belts are suitable for the following applications:

- heating and thermal stations, garbage incineration plants
- gypsum-cardboard products
- recycling, glass and processing plants
- swelling clay industry
- brickworks
- ...
- at your plant



### **Advantages:**

- limited and minimised tear and wear
- good cleaning ability and service life thanks to a special scraper (hard metal, ceramics)
- good troughability
- high adhesion strength
- high cost-efficiency due to low maintenance and operational expenses
- low cost endless splicing as with regular EP conveyor belts by hot curing, cold treatment and mechanical clamping
- favourable price/efficiency ratio
- low elongation at reference load
- manufacture according to DIN 22102
- improved weathering and rotting resistance
- moulded rubber edge

### **Belt widths:**

500, 650, 800, 1000, 1200, 1300,  
1400, 1600, 1800, 2000 mm.

Anglo-Saxon and other widths on request.

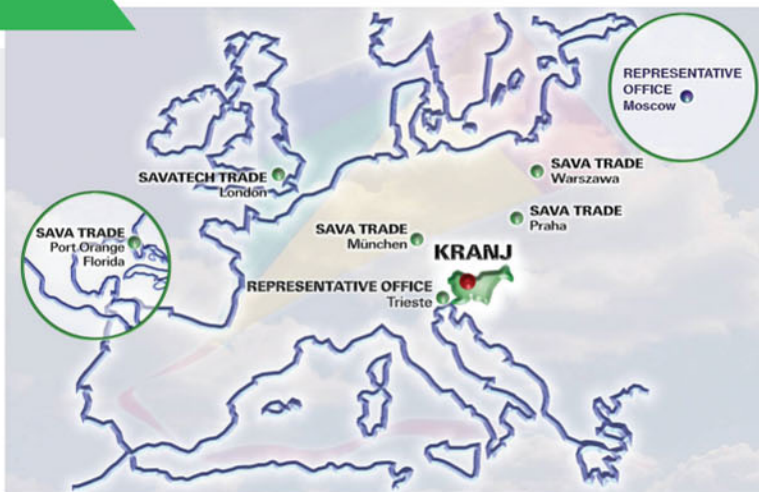
### **Belt constructions:**

Various tensile strengths from EP 250N/mm to EP 3150 N/mm  
are available on request (note minimum quantity).

Cover thickness on request.

Cover of W, WH and WL type.





**The SAVA range of conveyor belts includes:**

- troughable conveyor belts
- cross-stable, cross-rigid conveyor belts
- sliding conveyor belts
- reinforced conveyor belts RIPCHECK (with a textile breaker or steel reinforcement)
- elevator conveyor belts
- heat resistant conveyor belts
- oil and grease resistant conveyor belts
- non-staining conveyor belts (e.g. for timber industry)
- high abrasion resistant conveyor belts
- flame resistant and anti-static conveyor belts
- profiled conveyor belts from Finegrip/Superrip and Noppen conveyor belts to Steep angle conveying belts/Chevron belts with height of profile 14mm, 16mm, 25mm and 32mm, as well as profile-L 8mm
- Noppen conveyor belts
- profile-L conveyor belts
- tube-type conveyor belts PIPETYPE
- drum lagging
- clean cover conveyor belts
- combination of all the a.m. variants and many more
- ... other conveyor belts on request

Savatech d.o.o.  
Industrial Rubber Products and Tyres



**Conveyor Belts programme**

Škofjeloška c.6, 4502 Kranj  
Slovenia  
Tel.: + 386 4 206 53 37  
+ 386 4 206 58 20  
Fax: + 386 4 206 64 11  
<http://www.savatech.si>  
<http://www.savatech.co.uk>  
e-mail: info@sava.si

Selling agent:

**Lomo Trade Ltd.**

**Address:** 12-A Vezhen str., Lozenets,  
Sofia, Bulgaria

**Tel:** +359 886 86 66 96  
+359 885 86 33 83  
+359 2 44 20 606

**website:** <http://lomotrade.com>  
**mail:** [office@lomotrade.com](mailto:office@lomotrade.com)

SAVA reserves the right to introduce without any notice the changes related to the products and operating characteristics that may be entailed by a continual development and improvement. This brochure should be considered as a guide only. Do not hesitate to contact our engineers for further information.